



# The Data Publication Process at the World Data Centre for Climate with the Assistant System Atarrabi



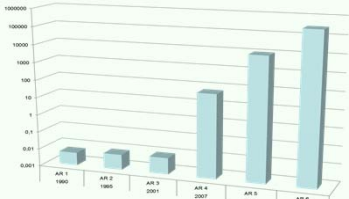
## Growing Data Amounts...

Growing data amounts lead to growing documentation requirements:

- on circumstances of data generation,
- on data provenance & postprocessing works,
- on data quality & completeness,
- on checks of the data & their results,
- on data accessibility: storage sites & formats,
- on access rights / constraints,
- on responsible individuals & institutes ...



The DKRZ and the High Performance Storage System (HPSS)



Increase of data volume for the IPCC Assessment Reports (partly estimated)

## Earth System Science Data (ESSD) The Data Publishing Journal

ESSD is an international, interdisciplinary journal for the publication of articles on original research data and datasets, furthering the reuse of high quality data of benefit for the Earth System Sciences.

The journal maintains sections for regular length articles, brief communications and commentary, as well as review articles and "Special Issues".

Articles in the data section may pertain to the planning, instrumentation and execution of experiments or collection of data. Articles on methods describe nontrivial statistical and other methods employed, e.g. to filter, normalize or convert raw data to primary, published data, as well as nontrivial instrumentation or operational methods.

Chief Editors : David Carlsson & Hans Pfeiffenberger

Submissions on original data are encouraged: [www.earth-system-science-data.net](http://www.earth-system-science-data.net)

ESSD information flyers are available on request!



## The Publication Assistant System Atarrabi

Atarrabi is a Graphical User Interface (GUI) for the authors' input of and checks on the metadata provided for a data publication. It supports all steps from the first login to the final metadata upload to the registration agency, which is DataCite for scientific data. Additionally, the scientists document their performed scientific quality control.



Atarrabi access page at WDCC: [cera-www.dkrz.de/atarrabi](http://cera-www.dkrz.de/atarrabi)

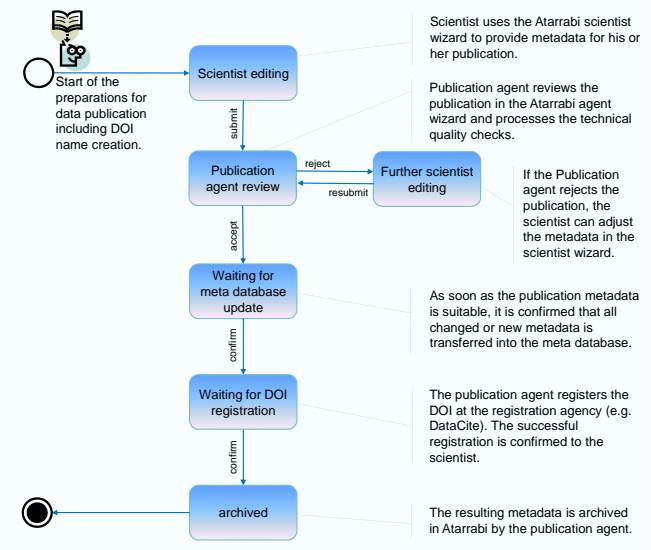


The three parts of the Atarrabi GUI: The scientist wizard, the wizard of the publication agent and the administrative part.

The scientist wizard: For publication of appropriate metadata the scientific data provider fills in or checks information on....

...general aspects of the data, ...authors of the data, ...citations of related publications, ...coverage in space-time, ...data quality, ...final summary of all provided metadata

## Workflow for DOI Data Publication Assignment with Atarrabi



## The DOI as a Handle to Permanent Data

Unlike the handle type "DOI", handles in general mark digital data objects of any kind which at least in scientific environments are not necessarily persistent.

The various projects at WDCC envisage using this more generic form of handles to relate to data objects, to the corresponding metadata objects, and to corresponding more general information.

	The handle/DOI:	The data:
Handles in general :	persistent as the data, resolvable	undetermined, any data
DOI :	persistent, resolvable, citable	persistent, archived, quality data



F. Toussaint (1), H. Höck (1), M. Dames (2), A. Düsterhus (3), A.N. Hense (3), A.V. Hense (2), M. Lautenschlager (1), F. Quad (2), and M. Stockhause (1)

(1) Deutsches Klimarechenzentrum, World Data Centre for Climate, Hamburg, Germany, [toussaint@dkrz.de](mailto:toussaint@dkrz.de); (2) Hochschule Bonn-Rhein-Sieg, Sankt Augustin, Germany; (3) Universität Bonn, Bonn, Germany

Abstract Reference Number EGU2012-6036



The World Data Centre for Climate is hosted by Deutsches Klimarechenzentrum GmbH in Hamburg, Germany

